

WASTE DISPOSAL



PORT OF
SKELLEFTEÅ

Welcome to the Baltic Sea

For your convenience, all ports in this area regulated under the Helsinki Convention are equipped and work in a similar way¹ when it comes to sludge and waste management. They operate a 'no special fee system'². This means that a fixed fee will be added to your harbor fee whether waste or sludge is delivered or not.

Please note that all disposal of waste into the sea³, as well as incineration⁴ onboard, is prohibited. As a general rule, you are required to discharge all ship-generated wastes, including sludge, at the port reception facility, before leaving port⁵.

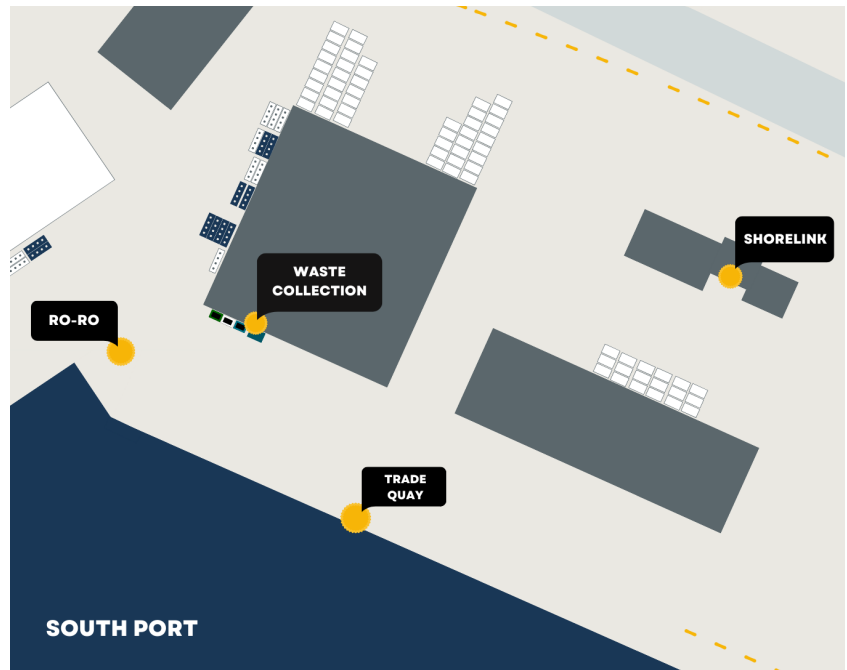
Please make sure that your equipment is suitable for discharging sludge at a minimum rate of 5 m³/h in accordance with current regulations⁶.

For more information please visit:

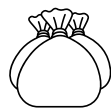
<http://www.helcom.fi/>

1) Helsinki Convention, Article 8.2 2) Helcom Recommendation 28E/10. 3) Marpol Annex V, Regulation 5(2). 4) Helsinki Convention, Article 10. 5) Helsinki Convention Annex IV, Regulation 6. 6) Marpol Annex I, Regulation 13.

HOW, WHERE, & WHAT



Non-hazardous waste



COMBUSTIBLE
Non-recyclable and non-hazardous waste (incl. food waste)



PLASTIC
Bags, bottles and styrofoam

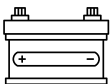


CLEAR GLASS
Bottles and jars



COLOURED GLASS
Bottles and jars

Hazardous waste



BATTERIES
Dry batteries



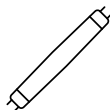
PAINT AND SOLVENTS
Paint, acetone, thinner and white spirit



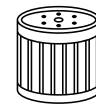
LIQUID OILS
Engine oil, hydraulic oil and transmission oil



ELECTRONICS
Devices with a cord or battery



FLUORESCENT TUBES
With tube size greater than 60 cm



OIL FILTERS



LIGHT SOURCES
Light bulbs, low-energy lamps, LED



AEROSOLS
Cans, paint sprayers and lubricating spray



SOLID OIL WASTE
Oily cottons and rags, oil absorbents



The waste collector in the **southern** harbour is located inside a bluepainted ordinary ISO 20" high-cube container.

At the Energy and the Concrete quay, in the **Northern** harbour, you have to order transport of the waste in advance.

The transport by tractor, lorry och similiar is done for free by the port of Skellefteå.

CONTACT

Emergency

Ambulance, Fire Service, Police, Customs

Local agent

ShoreLink Shipping

Port of Skellefteå

portof.skelleftea@skelleftea.se

+46 910-71 51 45

THANK YOU
FOR RECYCLING!

